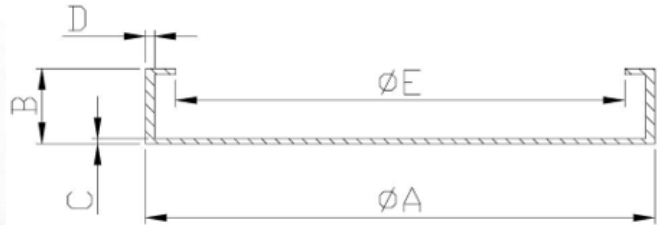
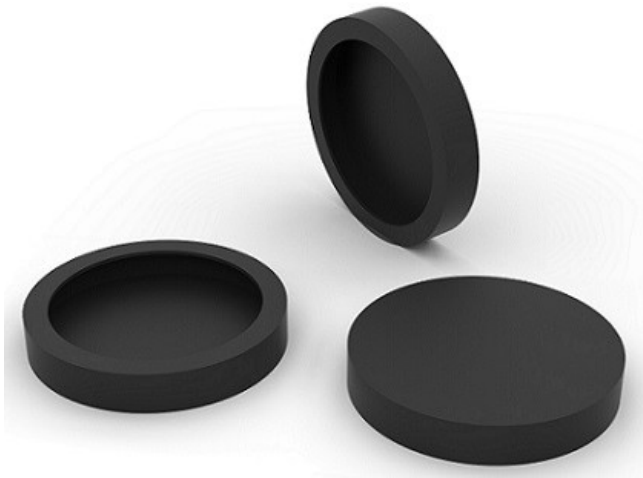


Rubber boots for ferrite pot magnets



Item No.	A	B	C	D	E	Weight
	mm	mm	mm	mm	mm	g
RCF-21	33.4	6.5	0.8	1.27	23.88	2.1
RCF-41	38.6	8.0	0.9	1.27	30.73	3.6
RCF-51	53.6	9.2	0.9	1.27	43.70	4.2
RCF-61	63.5	10.8	0.9	1.5	53.34	7.8
RCF-71	70.0	11.0	0.9	1.5	61.60	8.5
RCF-81	84.3	12.5	0.8	1.5	73.66	12.0

