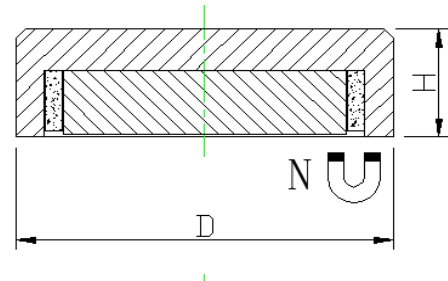
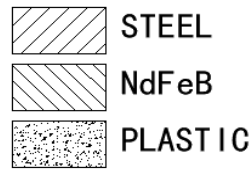
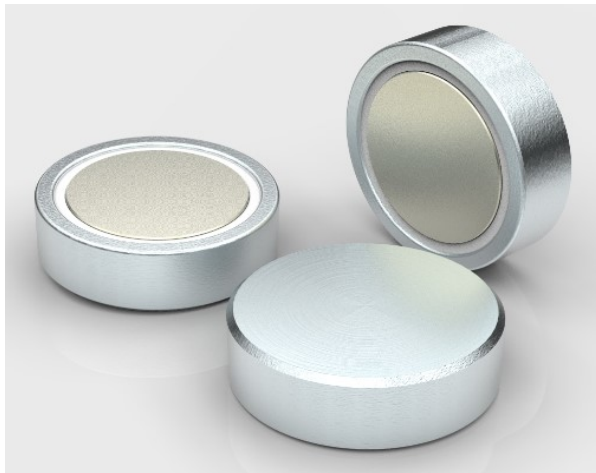


NdFeB flat pot magnet



Product description

These NdFeB pot magnets are flat and they are often glued at places where holding function is needed, but screw is not wanted for the protection of the surface.

Item No.	D	H	Force			Weight
	mm	mm	Kg	N	Lbs	g
M-RBNE6	6	4.5	0.5	5	1	1
M-RBNE8	8	4.5	1.3	13	3	2
M-RBNE10	10	4.5	2.5	25	5	3
M-RBNE13	13	4.5	6	60	13	4
M-RBNE16	16	4.5	9	95	21	6
M-RBNE20	20	6	14	140	31	14
M-RBNE25	25	7	20	200	45	25
M-RBNE32	32	7	35	350	78	41
M-RBNE42	42	9	68	666	149	85
M-RBNE48	48	11.5	85	833	187	130
M-RBNE60	60	15	125	1225	275	260

