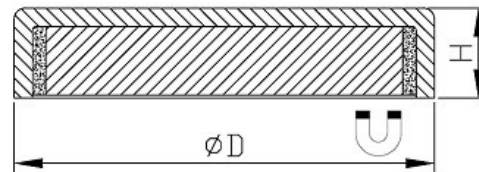
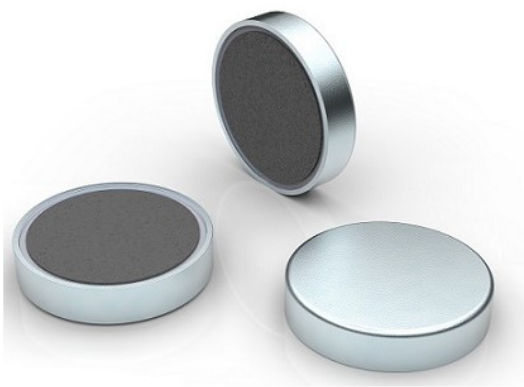


## Ferrite flat pot magnet



### Product description

These ferrite pot magnets are flat and they are often glued at places where holding function is needed, but screw is not wanted for the protection of the surface.

Item No.	D	H	Force			Weight
	mm	mm	Kg	N	Lbs	g
RBFE10	10	4.5	0.3	3	0.6	2
RBFE13	13	4.5	0.5	5	1.1	3
RBFE16	16	4.5	1.5	15	3.3	5
RBFE20	20	6	2.2	22	5	10
RBFE25	25	7	4	40	9	18
RBFE32	32	7	8	80	18	29
RBFE36	36	7.7	10	100	22	39
RBFE40	40	8	12	125	28	55
RBFE47	47	9	18	180	40	84
RBFE50	50	10	22	220	49	102
RBFE57	57	10.5	28	280	63	141
RBFE63	63	14	35	350	78	226
RBFE80	80	18	61	600	135	468
RBFE100	100	22	91	900	202	915

