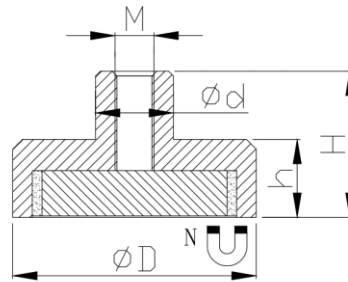
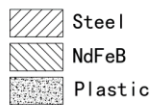
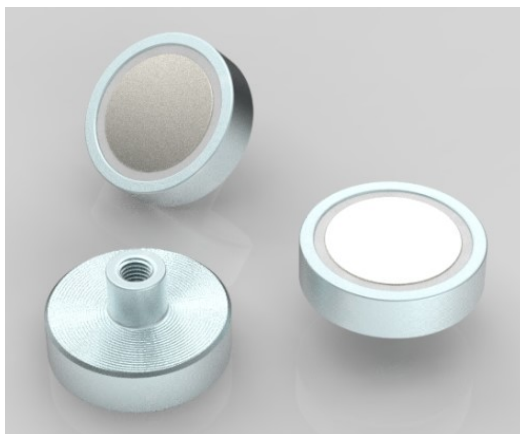


NdFeB flat pot magnet with threaded bush



Product description

This NdFeB pot magnet has a threaded bush and this structure makes it possible to mount hooks or other objects on this part. Comparing with its ferrite version, NdFeB pot magnet gives much higher holding force.

Item No.	D	d	H	h	M	Force			Weight
	mm	mm	mm	mm		Kg	N	Lbs	g
M-TNE6F	6	6	11.5	4.5	M3	0.5	5	1	2
M-TNE8F	8	6	11.5	4.5	M3	1.3	13	3	3
M-TNE10F	10	6	11.5	4.5	M3	2.5	25	5	4
M-TNE13F	13	6	11.5	4.5	M3	6	60	13	5
M-TNE16F	16	6	11.5	4.5	M4	9	95	21	7
M-TNE20F	20	8	13	6	M4	14	140	31	16
M-TNE25F	25	8	14	7	M4	20	200	45	27
M-TNE32F	32	10	15.5	7	M5	35	350	78	45
M-TNE40F	40	10	18	8	M6	68	670	150	80
M-TNE50F	50	15	18	9	M8	75	735	165	170
M-TNE60F	60	14	15	30	M8	113	1107	249	263
M-TNE75F	75	16	15	34	M10	164	1607	361	515

