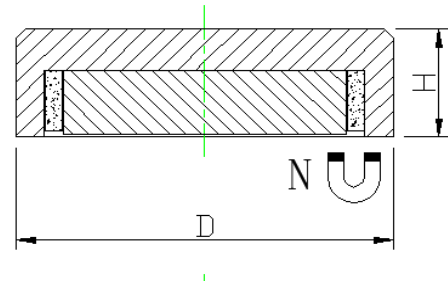
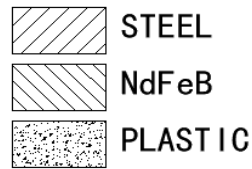
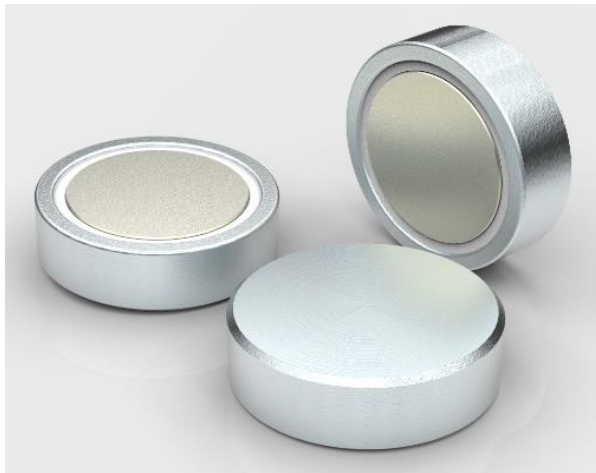


NdFeB flat pot magnet



Product description

These NdFeB pot magnets are flat and they are often glued at places where holding function is needed but screw is not wanted for the protection of the surface.

| Item No. | D | H | Force | | | Weight |
|----------|----|------|-------|------|-----|--------|
| | mm | mm | Kg | N | Lbs | g |
| M-RBNE6 | 6 | 4.5 | 0.5 | 5 | 1 | 1 |
| M-RBNE8 | 8 | 4.5 | 1.3 | 13 | 3 | 2 |
| M-RBNE10 | 10 | 4.5 | 2.5 | 25 | 5 | 3 |
| M-RBNE13 | 13 | 4.5 | 6 | 60 | 13 | 4 |
| M-RBNE16 | 16 | 4.5 | 9 | 95 | 21 | 6 |
| M-RBNE20 | 20 | 6 | 14 | 140 | 31 | 14 |
| M-RBNE25 | 25 | 7 | 20 | 200 | 45 | 25 |
| M-RBNE32 | 32 | 7 | 35 | 350 | 78 | 41 |
| M-RBNE42 | 42 | 9 | 68 | 666 | 149 | 85 |
| M-RBNE48 | 48 | 11.5 | 85 | 833 | 187 | 130 |
| M-RBNE60 | 60 | 15 | 125 | 1225 | 275 | 260 |

