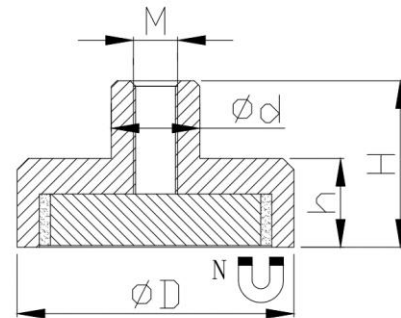
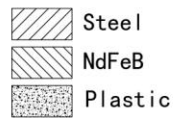
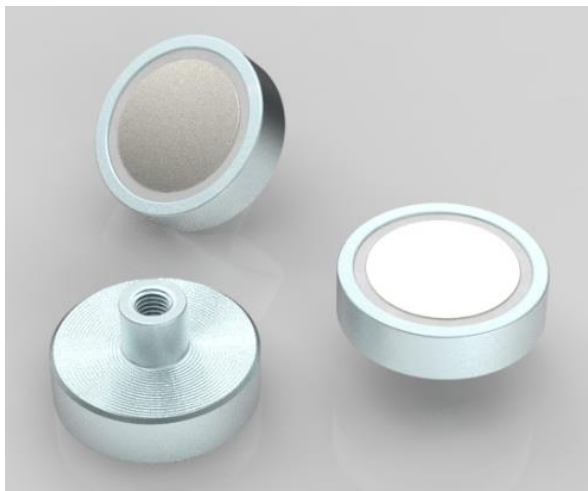


NdFeB flat pot magnet with threaded bush



Product description

These NdFeB pot magnets have a threaded bush and this structure makes it possible to mount hooks or other objects on this part. Comparing with its ferrite version NdFeB gives even higher holding force.

Item No.	D	d	H	h	M	Force			Weight
	mm	mm	mm	mm		Kg	N	Lbs	g
M-TNE6F	6	6	11.5	4.5	M3	0.5	5	1	2
M-TNE8F	8	6	11.5	4.5	M3	1.3	13	3	3
M-TNE10F	10	6	11.5	4.5	M3	2.5	25	5	4
M-TNE13F	13	6	11.5	4.5	M3	6	60	13	5
M-TNE16F	16	6	11.5	4.5	M4	9	95	21	7
M-TNE20F	20	8	13	6	M4	14	140	31	16
M-TNE25F	25	8	14	7	M4	20	200	45	27
M-TNE32F	32	10	15.5	7	M5	35	350	78	45
M-TNE40F	40	10	18	8	M6	68	670	150	80
M-TNE50F	50	15	18	9	M8	75	735	165	170
M-TNE60F	60	14	15	30	M8	113	1107	249	263
M-TNE75F	75	16	15	34	M10	164	1607	361	515

