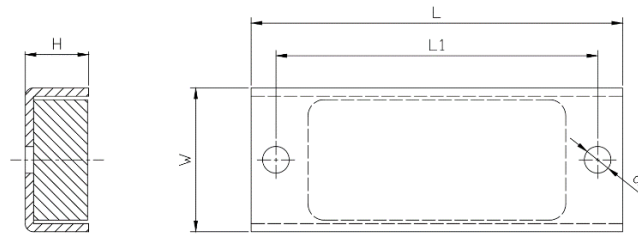


## Ferrite channel magnet with mounting holes 2.7"



### Product description

These Ferrite channel magnets have two mounting holes at both ends and they can be fastened easily on surfaces with screw bolt.

Item No.	L	W	H	Force			Weight
	mm	mm	mm	Kg	N	Lbs	g
CHFL2.7B	68.58	26.42	11.63	11	108	24	85

