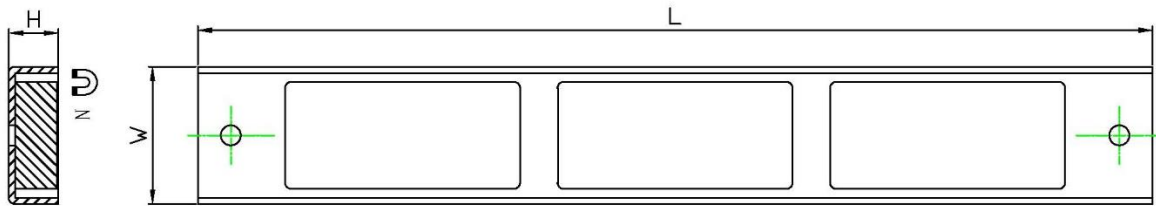
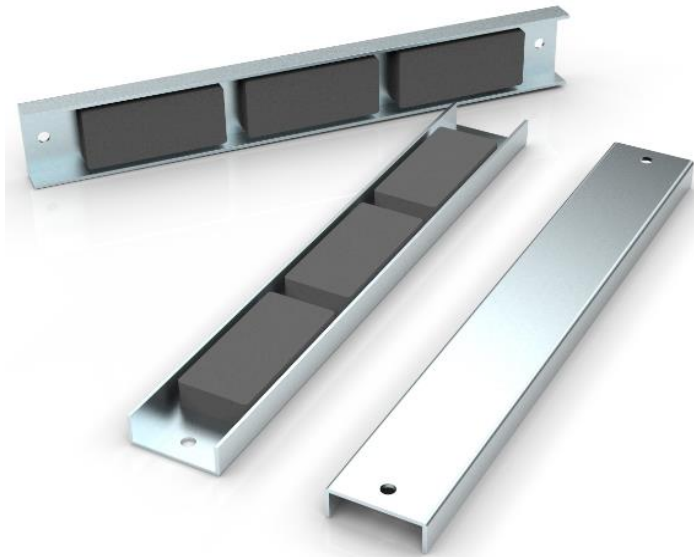


Ferrite channel magnet with mounting holes 12"



Product description

These Ferrite channel magnets have two mounting holes at both ends with 12" length. They can be fastened with screw bolt on walls to hold metal working parts, like knives, screwdrivers etc.

Item No.	L	W	H	Force			Weight
	mm	mm	mm	Kg	N	Lbs	g
CHFL12B	304.8	43.69	15.75	68	666	149	789.5

