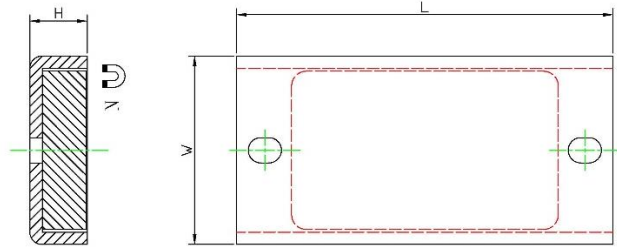
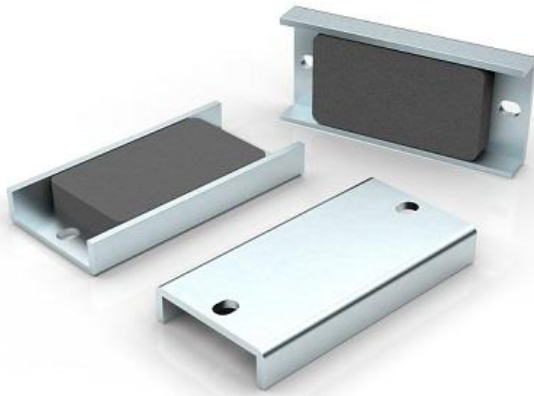


Ferrite channel magnet with mounting holes 3"



Product description

These Ferrite channel magnets have two mounting holes at both ends and they can be fastened easily on surfaces with screw bolt.

Item No.	L	W	H	Force			Weight
	mm	mm	mm	Kg	N	Lbs	g
CHFL3B	76.2	38.1	11.61	27	264	59	148

